



BMW Z4 GT3



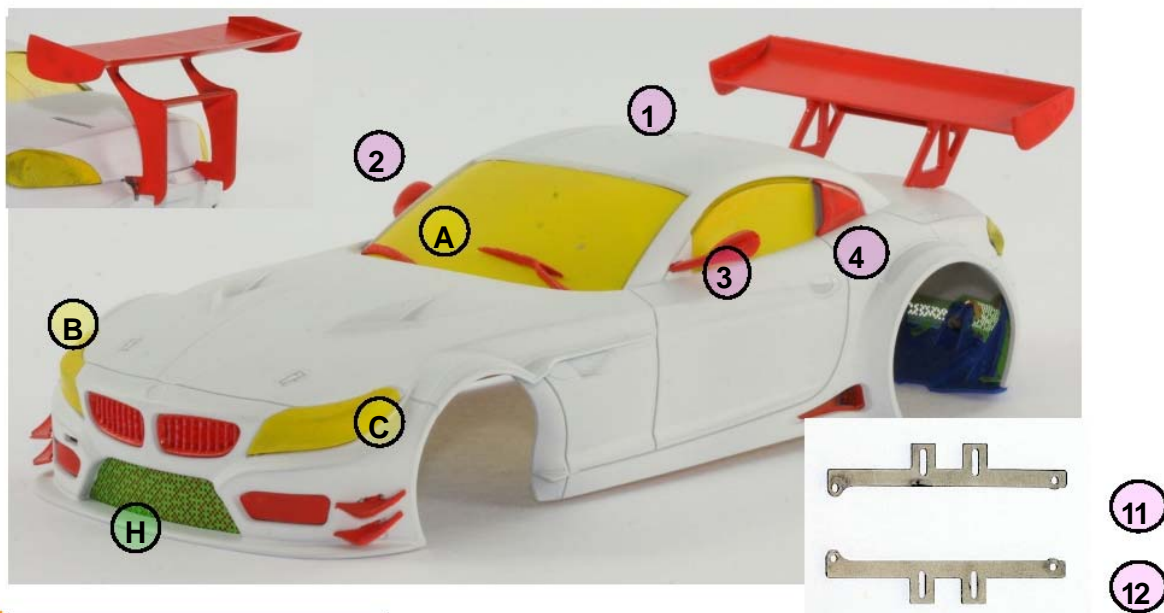
Approval Date: January-30-2013

Official Use Start Date: February-30-2013

Official Use Close Date: -- -- --



BMW Z4 GT3



Plastic Parts:

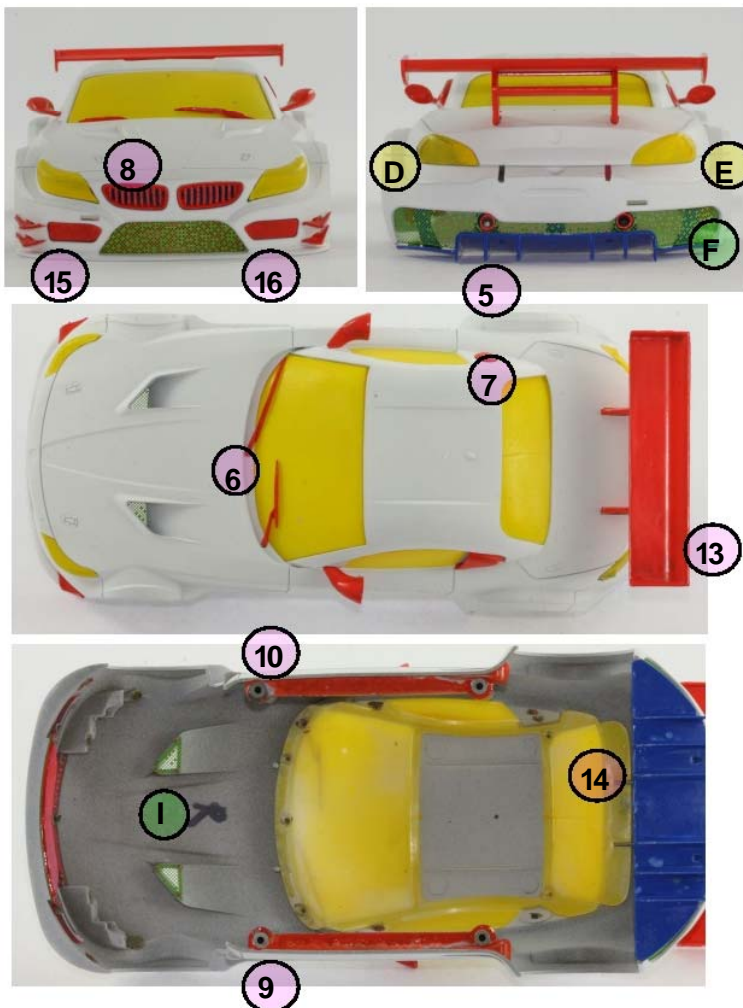
1. Body
2. Right side view mirror*
3. Left side view mirror*
4. Lateral air intake
5. Muffler (x 2)
6. Windshield wiper*
7. Fuel cap*
8. Front grill.
9. Right side body reinforcement
10. Left side body reinforcement
11. Right side metal body mount
12. Left side metal body mount
13. Rear wing (both versions allowed)
14. Rear diffuser
- 15- Front right grill
- 16- Front left grill

Transparent parts:

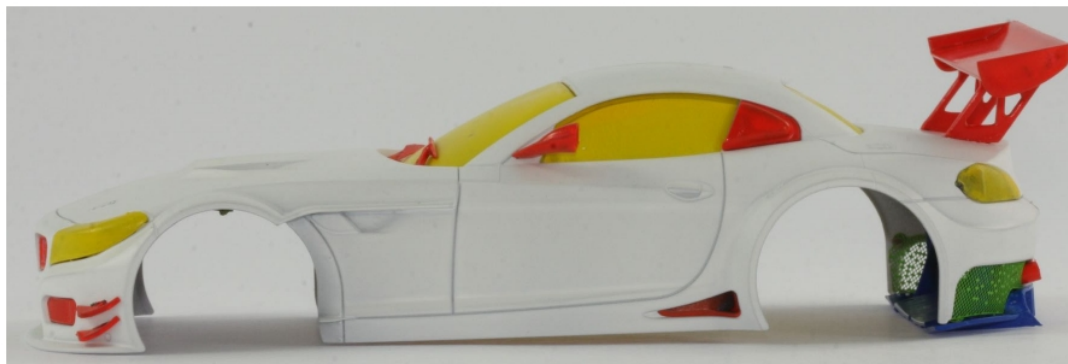
- A - Windshield
- B - Right side headlight
- C - Left side headlight
- D - Right break light
- E - Left break light

Metallic parts:

- F- Rear grill
- H - Front grill
- I - Double hood grill.*

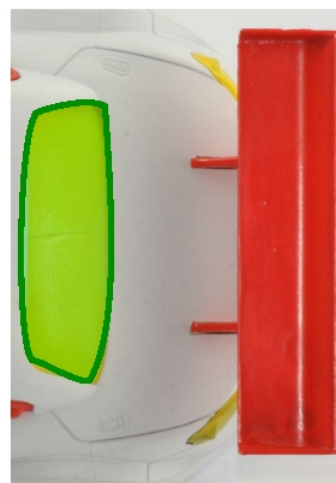


* Required only at the start of a competition.



Body dimensions, at rest, without chassis:

A - Minimum weight without light kit : (+5gr with lights)	55 gr
B - Maximum weight without light kit :(+5gr with lights)	60 gr
C - Total front (wheel arch to wheel arch) width:	80 mm
D - Total rear (wheel arch to wheel arch) width:	83 mm
E - Wheelbase	105 mm
F - Body minimum height	48 mm
G- Rear wing frontal height	43 mm
H- Rear wing rear height	48 mm
I- Body to chassis (lower plate) minimum height. Measured at the center.	1.5 mm
J- Body to track minimum height. Except rear diffuser.	2.5 mm
K- Rear diffuser minimum height	1 mm



Body dimensions, at rest, with chassis:

L- Total length (without rear wing)	178 mm
M - Body maximum front interior width:	65 mm
N - Body maximum rear interior width:	81 mm



*M/N: measured from wheel arch to wheel arch, next to body posts.

Allowed modifications:

- Rear wing: Foam, with a maximum thickness of 5mm, may be used to reinforce the rear wing - as indicated in black in the adjacent photo. The supports and their original positions must be respected. Replacement rear wing ref. SC-7906b is allowed.
- Interior: Lightweight interior ref. SC-7906 is allowed.
- Windows: The Lightweight windows, part of kit ref. SC-7906 are allowed. The rear windows, shown in green in the adjacent photo, may be painted.
- Rear diffuser (14): The lightweight diffuser, part of kit ref. SC-7906 is allowed. If lightweight diffuser is installed, original rear grill can be omitted.
- Side mirrors: Can be replaced with appropriate 1/24 scale injected plastic or rubber alternatives.

